

Emergency Evacuation

BL415 - Luddy Center for Artificial Intelligence - First Floor
1015 E. 11th St.
IN AN EMERGENCY, CALL 911

	EXIT ROUTE
	YOU ARE HERE
	SEVERE WEATHER SHELTER
	AED
	ACCESSIBLE EXIT

IN CASE OF FIRE:

Sound the alarm, close doors, use nearest possible exit and proceed away from building to an assembly area.

IF YOU ARE UNABLE TO EVACUATE:

Occupants may use any exit stairwell landing. Move to an area near an exit, out of the flow of traffic. Call 911 to inform emergency personnel of your location and wait for assistance.

FOR SEVERE WEATHER, SUCH AS TORNADO WARNINGS:

Go to the lowest level possible and nearest area without windows, such as a restroom, closet or interior stairwell and close the door.



Emergency Evacuation

BL415 - Luddy Center for Artificial Intelligence - First Floor
1015 E. 11th St.
IN AN EMERGENCY, CALL 911

	EXIT ROUTE
	YOU ARE HERE
	SEVERE WEATHER SHELTER
	AED
	ACCESSIBLE EXIT

IN CASE OF FIRE:

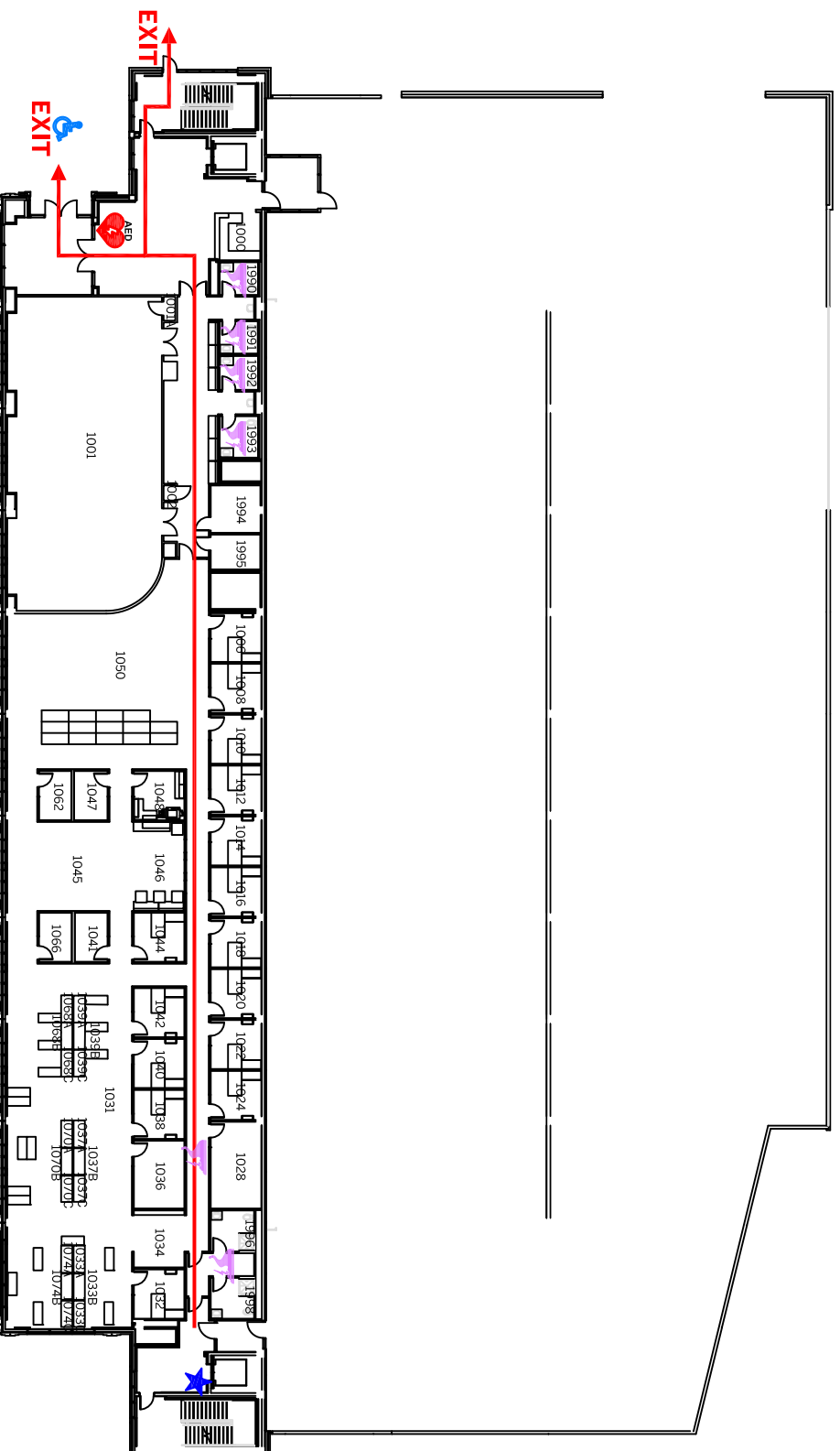
Sound the alarm, close doors, use nearest possible exit and proceed away from building to an assembly area.

IF YOU ARE UNABLE TO EVACUATE:

Occupants may use any exit stairwell landing. Move to an area near an exit, out of the flow of traffic. Call 911 to inform emergency personnel of your location and wait for assistance.

FOR SEVERE WEATHER, SUCH AS TORNADO WARNINGS:


Go to the lowest level possible and nearest area without windows, such as a restroom, closet or interior stairwell and close the door.



INDIANA UNIVERSITY

Emergency Evacuation

BL415 - Luddy Center for Artificial Intelligence - Second Floor
1015 E. 11th St.
IN AN EMERGENCY, CALL 911

	EXIT ROUTE
	YOU ARE HERE
	SEVERE WEATHER SHELTER
	AED
	ACCESSIBLE EXIT

IN CASE OF FIRE:

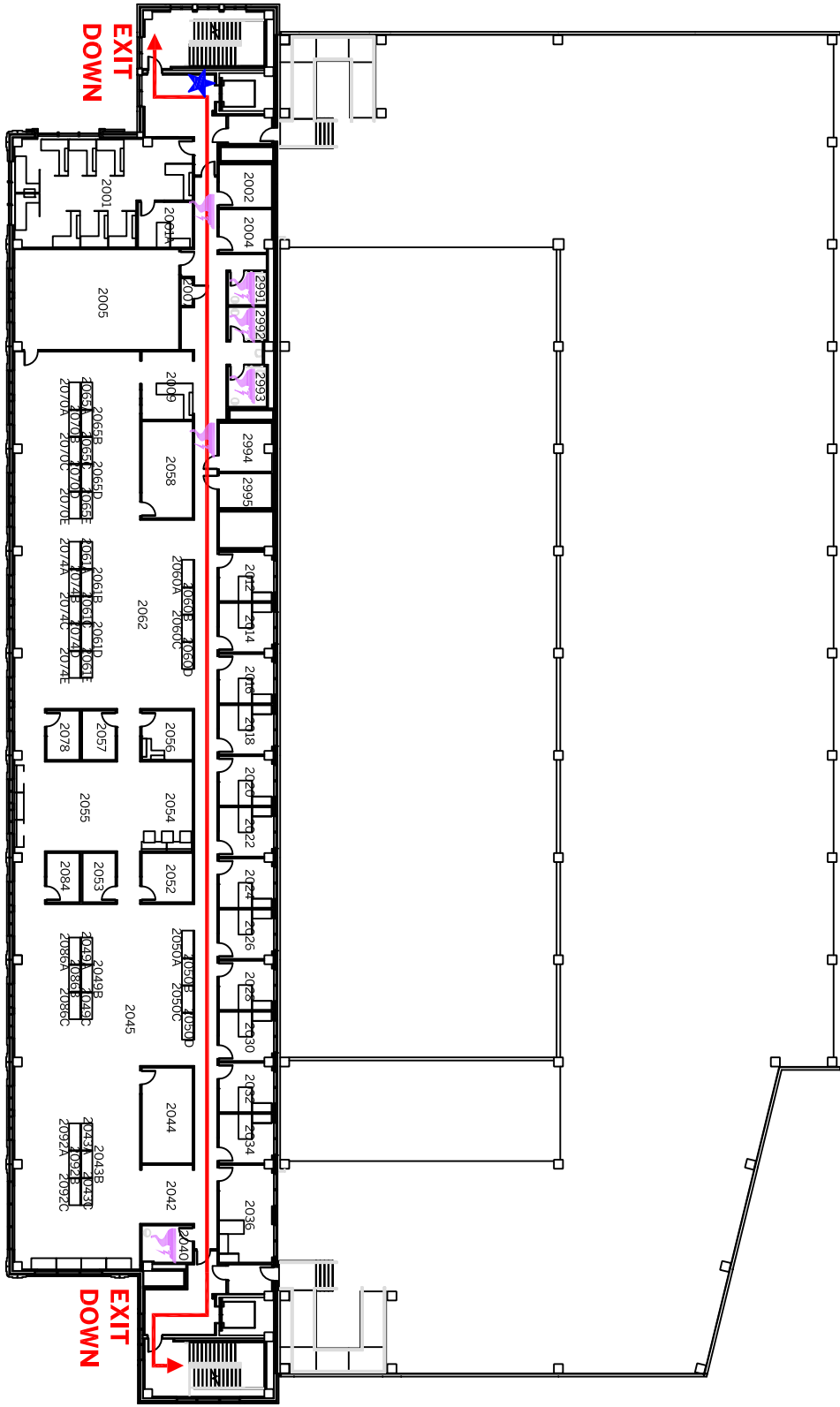
Sound the alarm, close doors, use nearest possible exit and proceed away from building to an assembly area.

IF YOU ARE UNABLE TO EVACUATE:

Occupants may use any exit stairwell landing. Move to an area near an exit, out of the flow of traffic. Call 911 to inform emergency personnel of your location and wait for assistance.

FOR SEVERE WEATHER, SUCH AS TORNADO WARNINGS:

Go to the lowest level possible and nearest area without windows, such as a restroom, closet or interior stairwell and close the door.



Emergency Evacuation

BL415 - Luddy Center for Artificial Intelligence - Second Floor
1015 E. 11th St.
IN AN EMERGENCY, CALL 911

	EXIT ROUTE
	YOU ARE HERE
	SEVERE WEATHER SHELTER
	AED
	ACCESSIBLE EXIT

IN CASE OF FIRE:
Sound the alarm, close doors, use nearest possible exit and proceed away from building to an assembly area.

IF YOU ARE UNABLE TO EVACUATE:
Occupants may use any exit stairwell landing. Move to an area near an exit, out of the flow of traffic. Call 911 to inform emergency personnel of your location and wait for assistance.

FOR SEVERE WEATHER, SUCH AS TORNADO WARNINGS:

Go to the lowest level possible and nearest area without windows, such as a restroom, closet or interior stairwell and close the door.



Emergency Evacuation

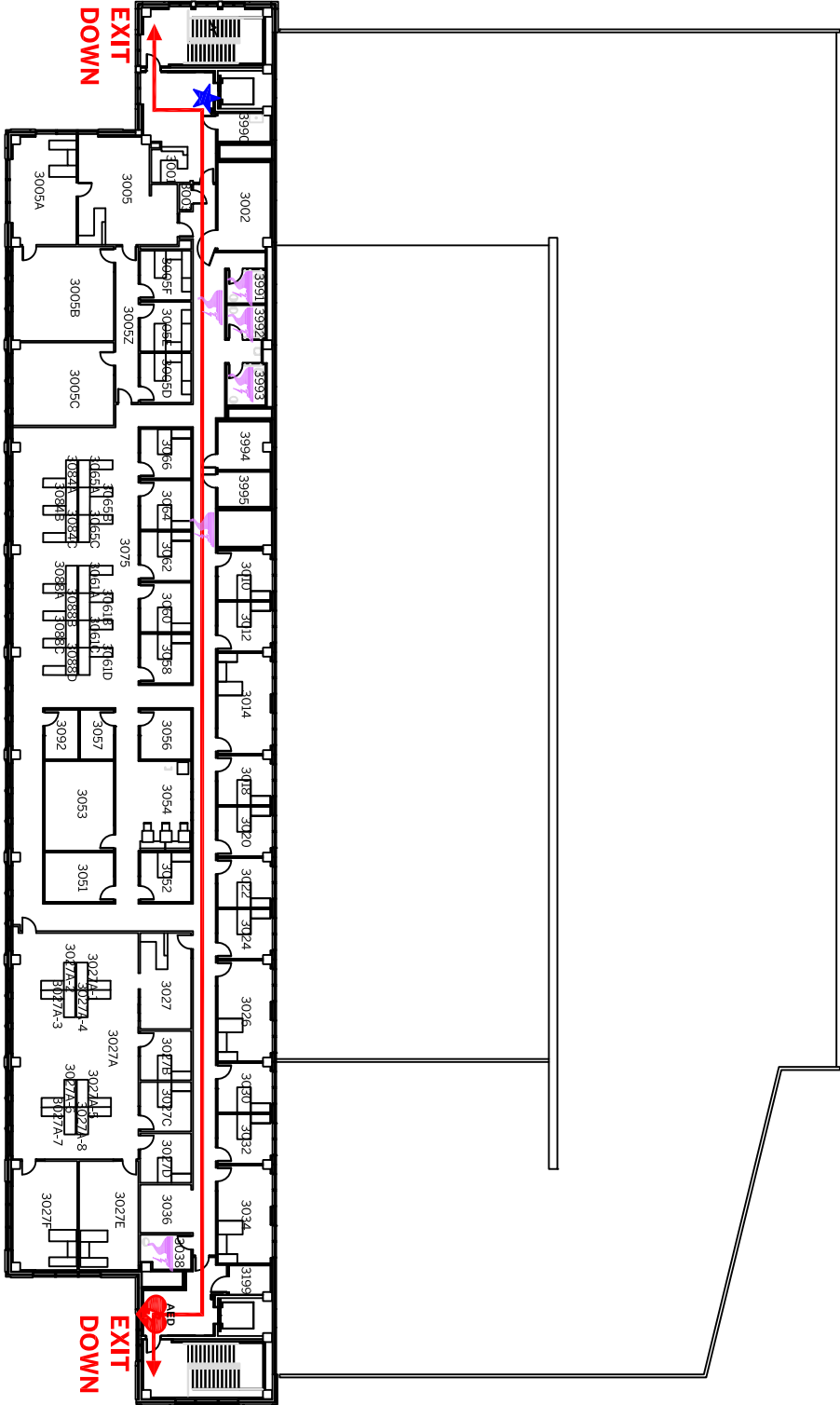
BL415 - Luddy Center for Artificial Intelligence - Third Floor
1015 E. 11th St.
IN AN EMERGENCY, CALL 911

	EXIT ROUTE
	YOU ARE HERE
	SEVERE WEATHER SHELTER
	AED
	ACCESSIBLE EXIT

IN CASE OF FIRE:
Sound the alarm, close doors, use nearest possible exit and proceed away from building to an assembly area.






IF YOU ARE UNABLE TO EVACUATE:
Occupants may use any exit stairwell landing. Move to an area near an exit, out of the flow of traffic. Call 911 to inform emergency personnel of your location and wait for assistance.

FOR SEVERE WEATHER, SUCH AS TORNADO WARNINGS:
Go to the lowest level possible and nearest area without windows, such as a restroom, closet or interior stairwell and close the door.



Emergency Evacuation

BL415 - Luddy Center for Artificial Intelligence - Third Floor
1015 E. 11th St.
IN AN EMERGENCY, CALL 911

	EXIT ROUTE
	YOU ARE HERE
	SEVERE WEATHER SHELTER
	AED
	ACCESSIBLE EXIT

IN CASE OF FIRE:
Sound the alarm, close doors, use nearest possible exit and proceed away from building to an assembly area.

IF YOU ARE UNABLE TO EVACUATE:
Occupants may use any exit stairwell landing. Move to an area near an exit, out of the flow of traffic. Call 911 to inform emergency personnel of your location and wait for assistance.

FOR SEVERE WEATHER, SUCH AS TORNADO WARNINGS:
Go to the lowest level possible and nearest area without windows, such as a restroom, closet or interior stairwell and close the door.

